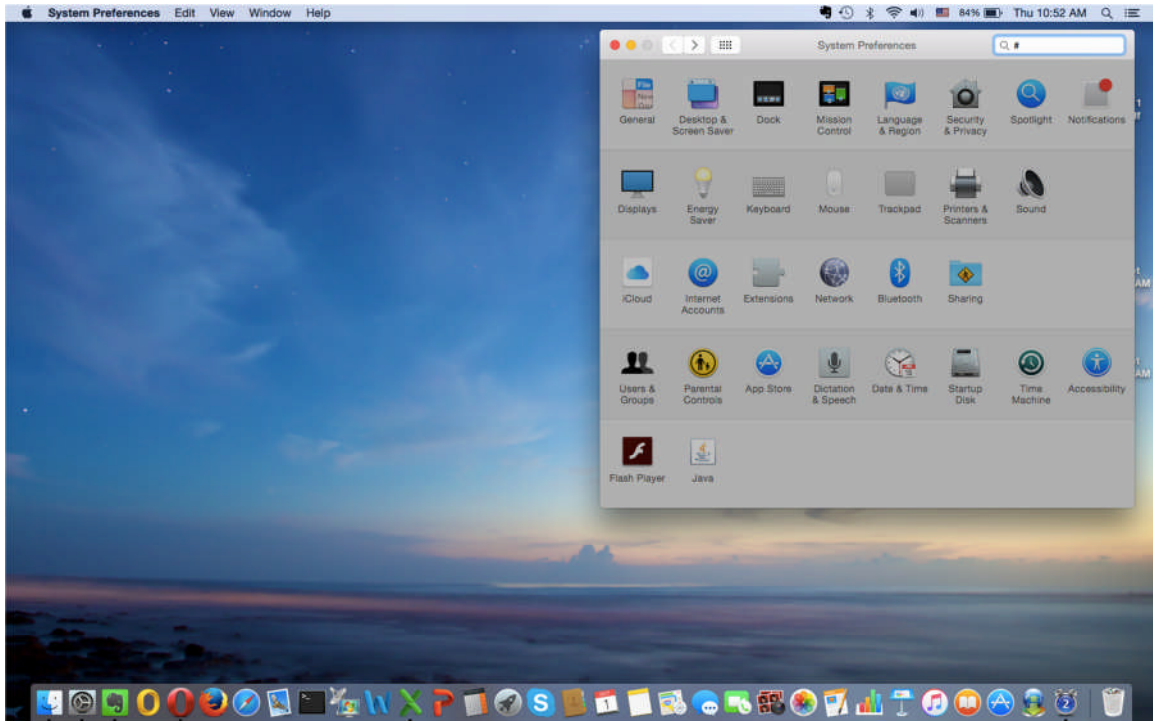
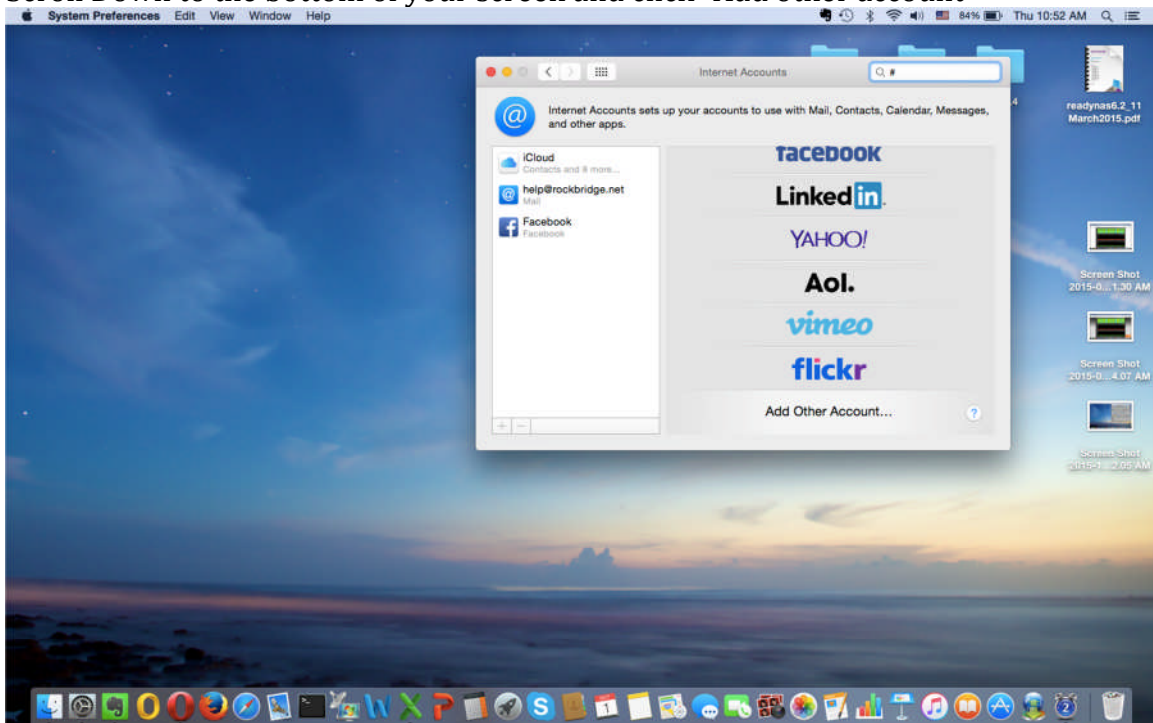


How to set up ROCKBRIDGE GLOBAL VILLAGE email account on your MAC computer

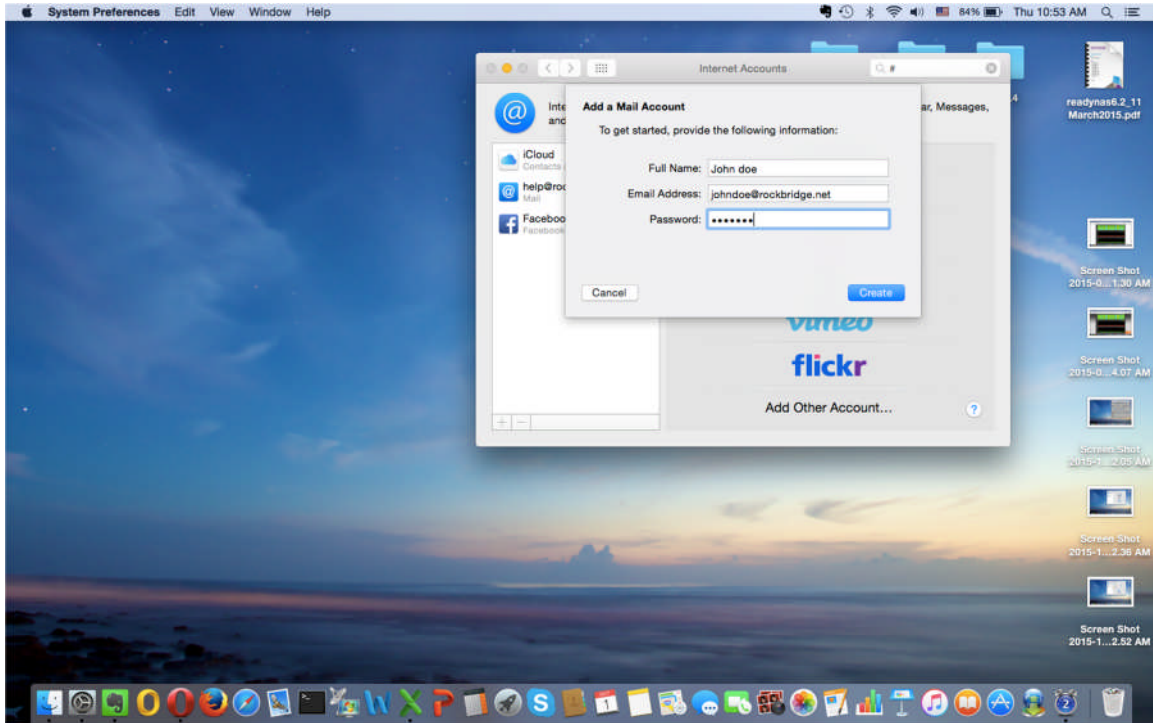
Click on System Preferences and then click Internet Accounts



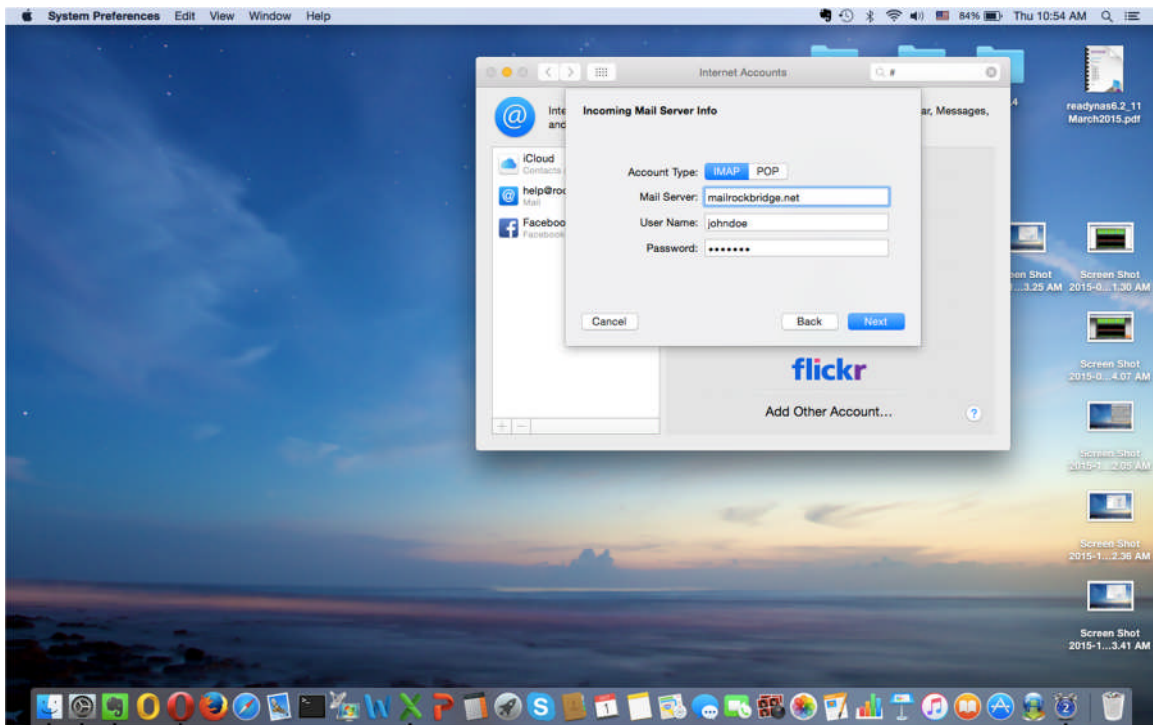
Scroll Down to the bottom of your screen and click "Add other account"



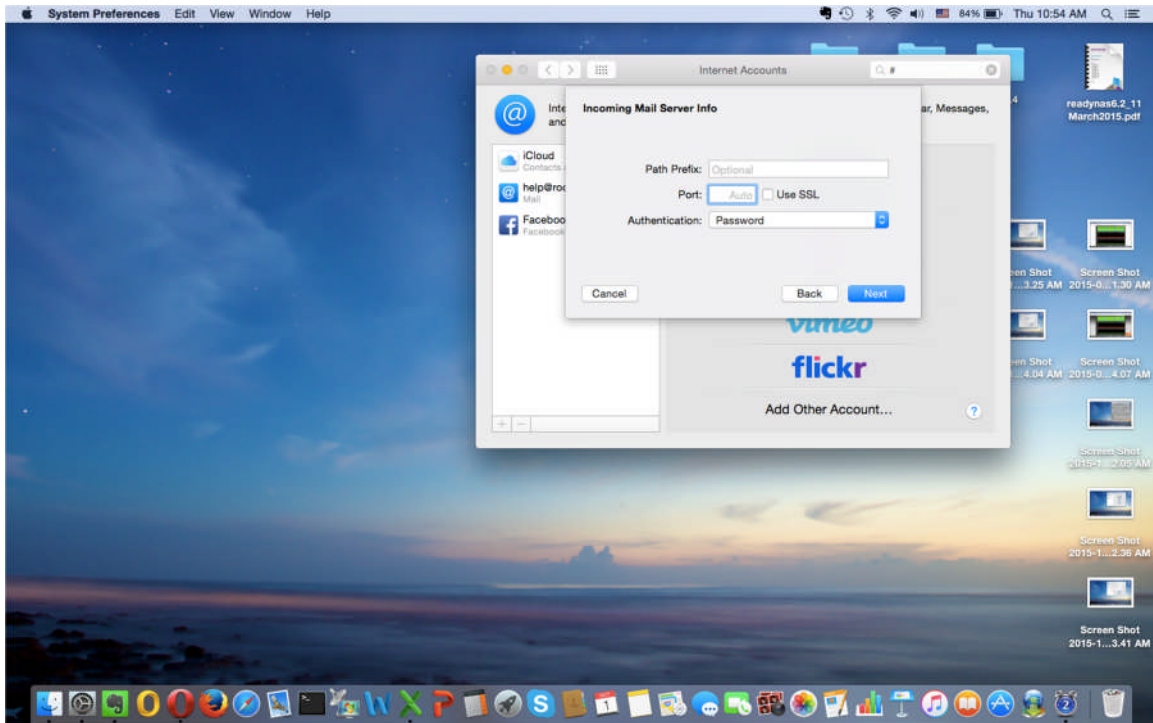
Type your full name, your email address and your password, click “Create”:



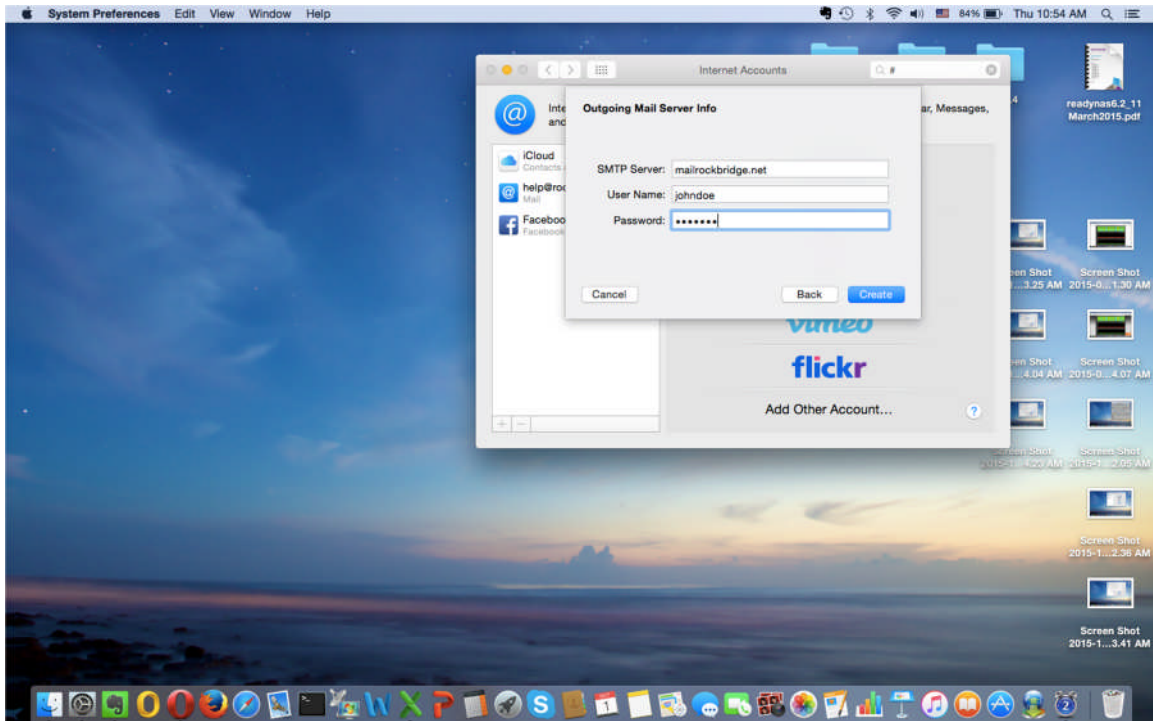
Under incoming mail server info select IMAP (default) and type: mail.rockbridge.net click “Next”.



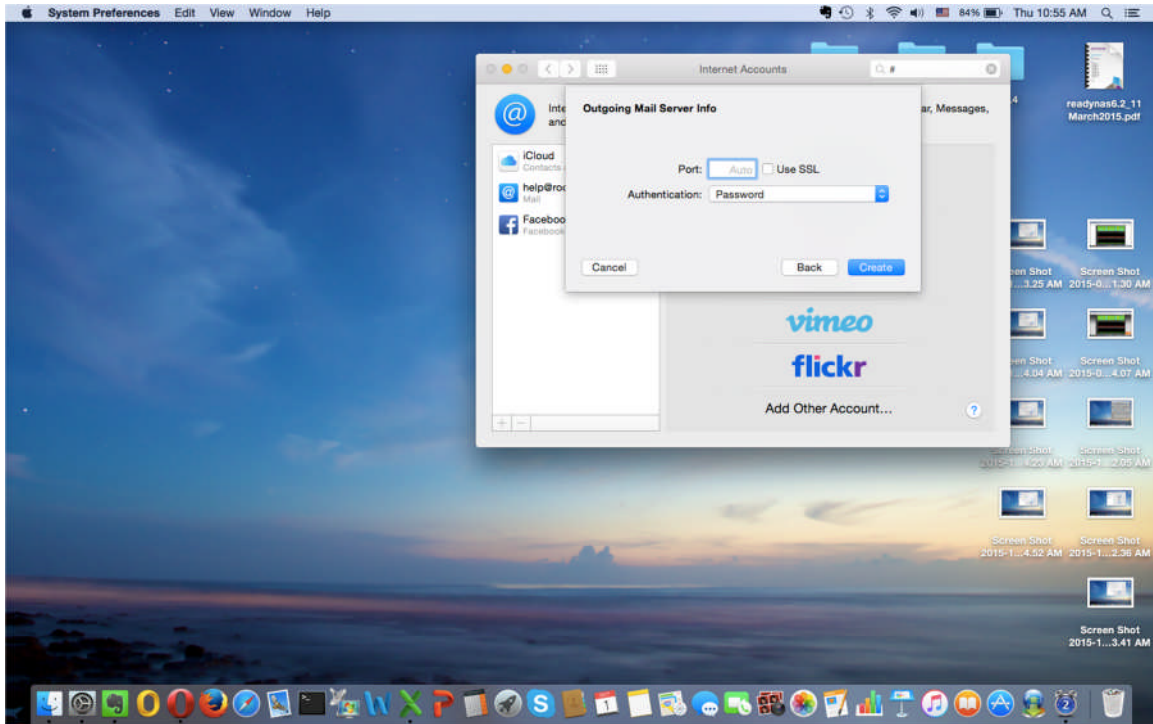
Under Incoming mail Server Info select Port Auto (default) and authentication “Password”, click “Next”



For outgoing Mail Server Info type under SMTP Server type: mail.rockbridge.net , click Create



Make sure that “Port Auto” (default) is selected. Make sure that under “Authentication Password” (default) is selected and click “Create”



Done!